



LASTING EXPRESSIONS

# PRODUCTCATALOGUE

1. JANUARY 2023



60<sup>y</sup>

SIXTY-YEAR WARRANTY



CREATIVE POSSIBILITIES



ECO-FRIENDLY

# PRODUCT ADVANTAGES

- 60<sup>Y</sup>** 60-year functional warranty
-  Pre-drilled and cut
-  Impact resistant
-  Withstands frost and water
-  Wide range of colours
-  Eco-friendly
-  Easy installation
-  Durable
-  Easy cleaning
-  Adviser competence
-  Range of surfaces, gloss levels and textures
-  Reduced on site material waste
-  Easy to remove graffiti

## Our range of surfaces create expressions for future generations

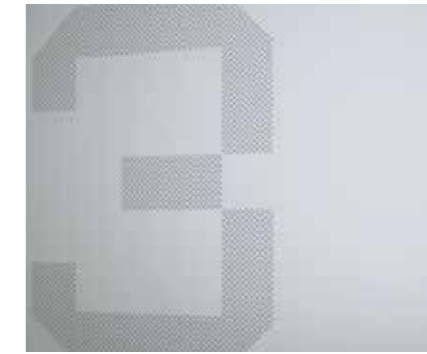
Steni delivers the widest and most exciting array of solutions, combining multiple formatting opportunities, to the facade industry. Delivering more than 50 million m2 of facades and 55 years in business, we stand as a reputable manufacturer of cost-effective facade solutions with lasting aesthetics. That is why we offer a 60-year functional warranty.

Steni works closely with building owners, architects and contractors to ensure long-term relationships. By combining experience with knowledge, innovation and enthusiasm – and by providing good BIM tools, it is our goal that you, our customers, will experience increased value beyond the product itself. Our customers should expect quick and easy service, good logistics solutions and strong customer service.

At Steni we believe enduring aesthetics, quality and the environment are the keys to a good future, that's why we have third-party verification and certificates to support our claims. We work hard to minimize waste, reduce CO2 emissions and to ensure that the life cycle costs of the buildings are kept low.

# CONTENTS

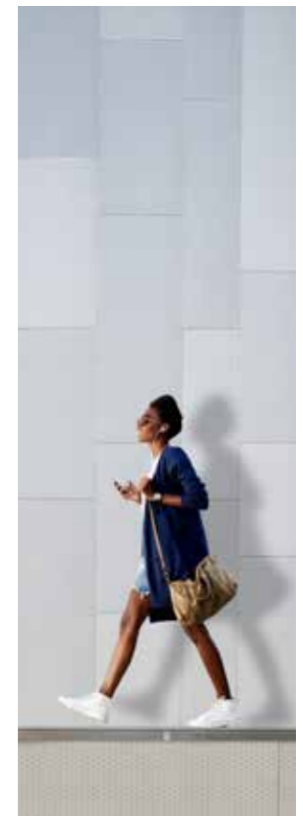
4  
STENI  
COLOUR



10  
STENI  
VISION

15  
GLOSS  
LEVELS

22  
FORMATS  
AND DRILLING



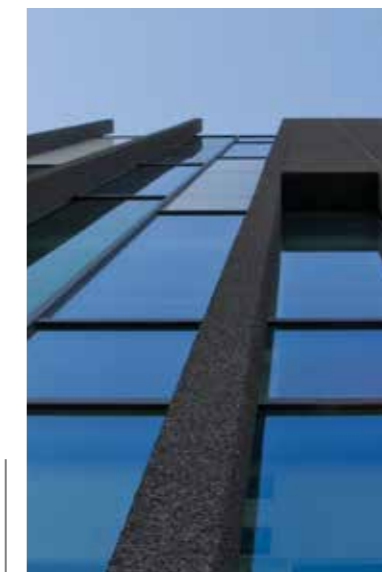
18  
TERRA  
BY STENI



17  
STENI  
NATURE  
GLASS



16  
STENI  
NATURE







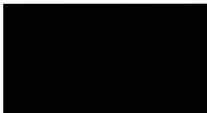
|                                       |           |
|---------------------------------------|-----------|
| Values                                | 2         |
| Steni Colour                          | 4         |
| Steni Colour Reuse                    | 8         |
| Steni Vision                          | 10        |
| <b>Gloss levels</b>                   | <b>15</b> |
| Steni Nature                          | 16        |
| Steni Nature Glass                    | 17        |
| Terra By Steni                        | 18        |
| Original accessories                  | 19        |
| Formats and drilling                  | 22        |
| Steni Colour and Vision designlements | 24        |
| Steni Nature designlements            | 25        |
| Handling utilities                    | 26        |
| Steni around the world                | 27        |



# STENI COLOUR 60<sup>y</sup>

A robust and smooth façade panel with a surface of electron-beam-cured acrylic for a clean and exclusive effect.

## STENI COLOUR – STOCKED COLOURS

|   |   |  |
|---|---|--|
|  |  |                                 |
| <b>SN 8001</b><br>NCS S 0500-N<br>Stocked: M-HM-HG                                | <b>SN 8010</b><br>NCS S 0502-Y<br>Stocked: M-HM                                   | <b>SN 8002</b><br>NCS S 1000-N<br>Stocked: M-HM  |
|  |  | <b>Glansgrader:</b><br><br>M - Matt<br>HM - Half Matt<br>HG - High Gloss<br>See more about gloss levels page 15. |
| <b>SN 8008</b><br>NCS S 8000-N<br>Stocked: M-HM                                   | <b>SN 8900</b><br>NCS S 9000-N<br>Stocked: M-HM                                   |  |

## STENI STANDARD FASTENERS (ACID-RESISTANT A4)

| Product                     | Dimensions     | No. per pack |
|-----------------------------|----------------|--------------|
| Wood screw*                 | 4.8 × 28/33 mm | 500 pcs      |
| Metal screw (self-drilling) | 4.8 × 25 mm    | 500 pcs      |

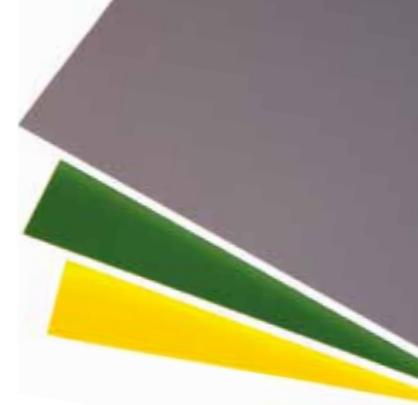
\* Stocked with untreated heads, and with painted heads in stock panel colours. The screws are supplied with a pan head and a T20 head (see page 19 for a complete overview).

Steni Colour is easy to maintain and quick to install, with minimal waste. The panels are highly environmentally friendly, and thanks to the lifetime warranty of 60 years the total life-cycle cost is the lowest in their class.

Steni Colour is a fibreglass-reinforced stone composite panel suitable for use as cladding on all types of buildings. The panels should be installed in accordance with our installation instructions. Steni Colour is available in a wide range of standard colours and formats, and in three gloss levels, so you will always be able to find a variant that is perfect for your project.

### HIGH FIRE CLASS

Steni Nature Coarse has A2-s1.d0 fire classification (ref our technical datasheet)



## STENI COLOUR PLANK (FS200)

Minimum quantity: 50 m<sup>2</sup>  
Only standard Steni Colour décors.  
Edge paint can be ordered in the same colour.

Format (height x length) including drilling.

- 196 x 1795 mm
- 196 x 2395 mm
- 196 x 2995 mm



## STANDARD PRODUCTION FORMATS (mm)

Minimum 10 m<sup>2</sup> per division.

Steni Colour stocked formats: 1,195 × 2,995 mm.  
Full production width of 1195 mm is always charged.

| Standard panel divisions* | Standard production length |
|---------------------------|----------------------------|
| 295 + 295 + 295 + 295     | 1195-3495                  |
| 395 + 395 + 395           | 1020-3495                  |
| 595 + 595                 | 850-3495                   |
| 795 + 395                 | 1020-3495                  |
| 895 + 295                 | 1195-3495                  |
| 1195**                    | 850-3495                   |

\* All panels split from the same full-width panel must be of the same length.  
\*\*No minimum quantity for 1195 mm width.

Steni facade panels are delivered with light edges as standard and dark edges as an option at an additional cost.

For a complete overview of available formats, see the tables from page 22 onwards.

Other formats available at an additional cost. Minimum width (height?) is 196 mm. Steni delivers L- and U-elements (ref. p. 24)

### ABOUT COLOUR CODES

All standard surfaces have a unique Steni code beginning with SN, e.g. SN 8010 (Colour), SN 100 (Nature). In addition we give NCS colour codes for Steni Colour to make it easier for you to match the colour with other products.

### COLOUR PRECISION

We check the colour of Steni Colour using a spectrophotometer, which measures colour differences in accordance with the measuring methods specified in CIE 15:2004. The permitted variance within the same batch is  $\Delta E = 0.5$ . The permitted variance between different batches is  $\Delta E = 3.0$ .

### CAN'T FIND THE COLOUR YOU'RE LOOKING FOR?

We mix all of the colours for Steni Colour ourselves in the factory. This uniquely enables us to offer special colours within the NCS and RAL colour systems. We now have over 2,200 approved colours in our archive, so please contact us if you want a colour that is not in our standard range. Unused paint degrades over time, so all colours, whether standard or special colours, are mixed to order.

Even though our processes are high-precision, there may be small variations between mixes. You may wish to bear this in mind if your project is being planned with partial deliveries. Note that we are unable to offer exact colour matches between multiple production runs.



Find out more about why Steni is good for the environment.



Installation instructions: Scan the QR code or visit steni.com



Take a good look at our extensive range of surfaces.

STANDARD COLOURS STENI COLOUR

BASE COLOUR

|   |   |   |  |   |   |   |   |   |   |
|---|---|---|--|---|---|---|---|---|---|
|    |    |    |    |    |    |    |    |    |    |
| <b>SN 8010</b><br>NCS S 0502-Y<br>Stocked: M-HM                                     | <b>SN 9500</b><br>NCS S 1002-Y  | <b>SN 9205</b><br>NCS S 1502-Y  | <b>SN 9501</b><br>NCS S 2002-G50Y  | <b>SN 8671</b><br>NCS S 3502-Y  | <b>SN 8672</b><br>NCS S 4502-Y  | <b>SN 8673</b><br>NCS S 5502-Y  | <b>SN 9502</b><br>NCS S 7502-Y  | <b>SN 9503</b><br>NCS S 7502-B  | <b>SN 9504</b><br>NCS S 8005-R20B   |
|    |    |    |    |    |    |    |    |    |    |
| <b>SN 8011</b><br>NCS S 1005-Y20R   | <b>SN 8013</b><br>NCS S 1002-G50Y   | <b>SN 9505</b><br>NCS S 1604-Y22R   | <b>SN 8661</b><br>NCS S 3502-G   | <b>SN 9506</b><br>NCS S 3010-G90Y   | <b>SN 9507</b><br>NCS S 3010-Y50R   | <b>SN 9508</b><br>NCS S 4005-Y20R   | <b>SN 9509</b><br>NCS S 4005-G80Y   | <b>SN 9510</b><br>NCS S 4010-Y10R   | <b>SN 9511</b><br>NCS S 4005-Y50R   |
|    |    |    |    |    |    |    |    |    |    |
| <b>SN 4072</b><br>NCS S 2010-Y10R   | <b>SN 3413</b><br>NCS S 1020-Y10R   | <b>SN 9512</b><br>NCS S 2020-Y10R   | <b>SN 9513</b><br>NCS S 2030-Y10R  | <b>SN 9514</b><br>NCS S 2020-Y20R   | <b>SN 9515</b><br>NCS S 3020-Y20R   | <b>SN 9516</b><br>NCS S 4020-Y20R   | <b>SN 9517</b><br>NCS S 2030-Y20R   | <b>SN 9518</b><br>NCS S 3030-Y30R   | <b>SN 9523</b><br>NCS S 4020-Y40R   |
|    |    |    |    |    |    |    |    |    |    |
| <b>SN 9520</b><br>NCS S 2005-Y20R   | <b>SN 9521</b><br>NCS 1704-Y50R   | <b>SN 9522</b><br>NCS 1505-Y30R   | <b>SN 4012</b><br>NCS S 2010-Y30R  | <b>SN 4500</b><br>NCS S 2020-Y40R   | <b>SN 4357</b><br>NCS S 3030-Y50R   | <b>SN 9524</b><br>NCS 3917-Y66R   | <b>SN 9525</b><br>NCS S 4030-Y60R   | <b>SN 9526</b><br>NCS S 5020-Y50R   | <b>SN 9532</b><br>NCS 5010-Y82R   |
|   |   |   |   |   |   |   |   |   |   |
| <b>SN 9527</b><br>NCS 2503-Y80R   | <b>SN 9528</b><br>NCS 2509-Y77R   | <b>SN 4353</b><br>NCS S 3010-Y70R   | <b>SN 9529</b><br>NCS 3208-Y77R  | <b>SN 9530</b><br>NCS S 4010-Y70R   | <b>SN 9531</b><br>NCS S 4020-Y80R   | <b>SN 9533</b><br>NCS S 5020-Y80R   | <b>SN 9534</b><br>NCS S 5030-Y80R   | <b>SN 2008</b><br>NCS S 4550-Y80B   | <b>SN 9535</b><br>NCS S 6020-Y80R   |
|  |  |  |  |  |  |  |  |  |  |
| <b>SN 9536</b><br>NCS S 2005-G60Y   | <b>SN 9308</b><br>NCS S 2010-G30Y   | <b>SN 9537</b><br>NCS S 3010-G50Y   | <b>SN 6362</b><br>NCS S 4010-G50Y  | <b>SN 9307</b><br>NCS S 5010-G30Y   | <b>SN 9538</b><br>NCS 5317-G40Y   | <b>SN 9539</b><br>NCS 2703-B02G   | <b>SN 9540</b><br>NCS 3605-R99B   | <b>SN 7020</b><br>NCS S 5010-R90B   | <b>SN 9541</b><br>NCS 5217-R95B   |

ACCENT COLOUR

|   |   |   |  |   |   |   |   |   |   |
|---|---|---|--|---|---|---|---|---|---|
|  |  |  |  |  |  |  |  |  |  |
| <b>SN 9103*</b><br>NCS S 7020-R   | <b>SN 9100*</b><br>NCS S 1580-Y90R  | <b>SN 9101*</b><br>NCS S 2070-Y60R  | <b>SN 9102*</b><br>NCS 0876-Y44R   | <b>SN 9519*</b><br>NCS S 3040-Y20R  | <b>SN 9200*</b><br>NCS S 1070-Y10R  | <b>SN 9302*</b><br>NCS S 0565-G50Y  | <b>SN 9300*</b><br>NCS S 1070-G30Y  | <b>SN 9304*</b><br>NCS 5040-B30G  | <b>SN 9303*</b><br>NCS S 6530-B30G  |

GRAYSCALE

|   |   |   |  |   |   |   |   |   |   |
|---|---|---|--|---|---|---|---|---|---|
|  |  |  |  |  |  |  |  |  |  |
| <b>SN 8001</b><br>NCS S 0500-N<br>Stocked: M-HM-HG                                  | <b>SN 8002</b><br>NCS S 1000-N<br>Stocked: M-HM                                     | <b>SN 8003</b><br>NCS S 2000-N<br>Stocked: M  | <b>SN 8020</b><br>NCS S 3000-N<br>Stocked: M   | <b>SN 8004</b><br>NCS S 4000-N  | <b>SN 8005</b><br>NCS S 5000-N  | <b>SN 8006</b><br>NCS S 6000-N  | <b>SN 8007</b><br>NCS S 7000-N  | <b>SN 8008</b><br>NCS S 8000-N<br>Stocked: M-HM                                       | <b>SN 8900</b><br>NCS S 9000-N<br>Stocked: M-HM                                       |

Printed colours may deviate slightly from the actual colours. Please request a product sample. \* Accent colors cannot be supplied in matte gloss; only HM and HG.

# STENI COLOUR REUSE

The façade system designed for reuse



Reuse of building materials is the current and future answer to several global environmental challenges. Steni Colour Reuse is a façade system designed to be used repeatedly.

Our façade panels are environmentally friendly and have an expected lifetime of more than 100 years which makes them a good choice for the environment and sustainability. Now we have taken the step further by launching Steni Colour Reuse, a set of standardised façade panels that systemise reuse. These are façade panels that can be reused directly, when they have finished their service in one building, or if desired upgraded with a new color and then reused again.

Steni Colour Reuse comes with a written 60-year functional warranty. If the façade panels are reused after 40 years, the residual warranty of 20 years follows the façade panels.

## STENI COLOUR REUSE PRODUCTION FORMATS [mm]

Minimum 10 m<sup>2</sup> per division.

| Standard panel divisions* | Standard production length |
|---------------------------|----------------------------|
| 395 + 395 + 395           | 1195, 1595, 2395           |
| 595 + 595                 | 1195, 1795, 2395           |
| 795 + 395                 | 1195, 1595, 2395           |
| 1195**                    | 1195, 1795, 2395           |

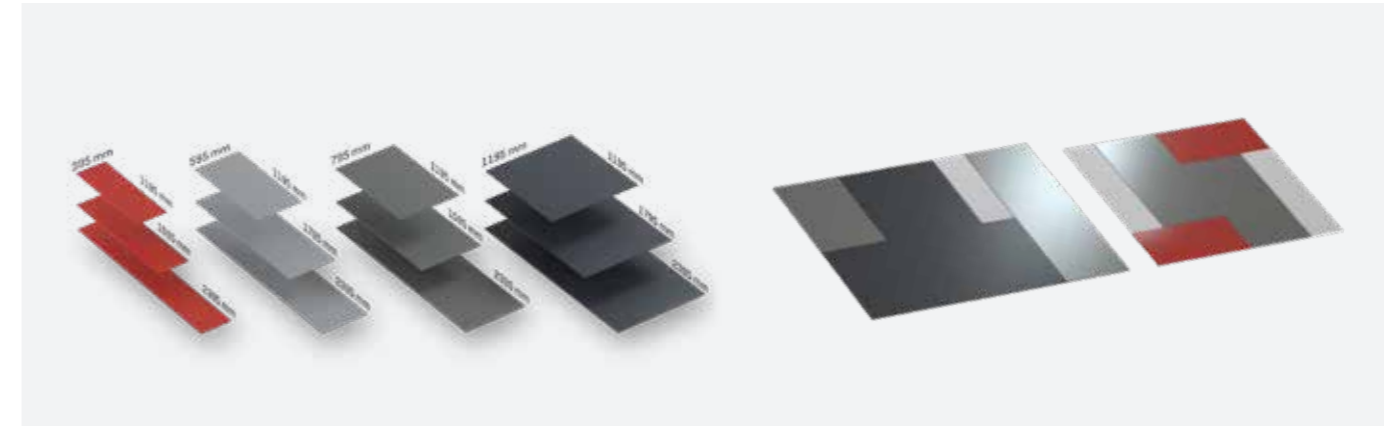
\* All panels split from the same full-width panel must be of the same length.

\*\*No minimum quantity for 1195 mm width.

Steni facade panels are delivered with light edges as standard and dark edges as an option at an additional cost.

Steni delivers L- and U-elements (ref. p. 24)

## PROPERTIES OF STENI COLOR REUSE



### SUSTAINABLE OPPORTUNITIES

A used Steni facade panel can be reused as it is by adapting the boring on the new facade to the drill pattern on the used facade panel (standard c/c 400 mm or c/c 600 mm).

### ROOM FOR FLEXIBILITY AND CREATIVITY

Steni Colour Reuse comes in 12 different panel sizes corresponding to the mindset behind Lego®. The colour selection is the same as for Steni Colour, i.e. 80 standard colours, of which 70 can be supplied in three gloss levels; M, HM and HG and 10 can be supplied in two gloss levels; HM and HG.

### EASY TO ASSEMBLE AND DISASSEMBLE

Steni façade panels are robust and impact-resistant. They can be easily assembled, disassembled, and reassembled again - several times - without being broken in the processes.

### STANDARDIZED VELCRO PATTERN

Steni Colour Reuse is available in 6 formats pre-drilled with standard drilling patterns adapted to c/c 400 mm and 6 formats pre-drilled with standard drilling patterns adapted to c/c 600 mm. The formats and drilling patterns are adapted for both horizontal and vertical mounting.

## FROM LINEAR TO CIRCULAR ECONOMY

At Steni we recognize the importance of contributing to a sustainable circular economy. One of our key features is durability and we want to send as little material as possible out of the cycle.

This is why, after reaching the end of one cycle, it is our goal that 100% of Steni Colour Reuse will be reused in either new projects or renovations.



Book a project meeting (follow the QR code).

# STENI VISION 60<sup>Y</sup>

A robust and smooth façade panel with a surface of print and electron-beam-cured acrylic for a unique and creative effect.

Steni Vision is a fiberglass-reinforced stone composite panel intended for exterior cladding on all types of buildings. The panels are mounted according to our installation instructions.

## STANDARDPRINT STENI VISION

### STENI VISION - WOOD - ACACIA



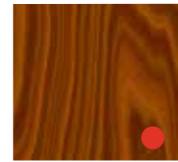
**Acacia Pale M**  
Scew colour - SN 4072  
Caulk colour - SN 4072\*



**Acacia Natural M**  
Scew colour - SN 9202  
Caulk colour - SN 9202\*



**Acacia Grey M**  
Scew colour - SN 8006  
Caulk colour - SN 8006\*

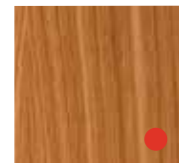


**Acacia Brown M**  
Scew colour - NCS S 7020-Y30R  
Caulk colour - NCS S 7020-Y307-R\*

### STENI VISION - WOOD - OAK



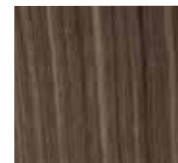
**Oak White M**  
Scew colour - SN 4012  
Caulk colour - SN 4012\*



**Oak Natural M**  
Scew colour - SN 9202  
Caulk colour - SN 9202\*



**Oak Dark M**  
Scew colour - NCS S 4550-Y  
Caulk colour - NCS S 4550-Y\*



**Oak Grey M**  
Scew colour - SN 8007  
Fugefarge - SN 8007\*

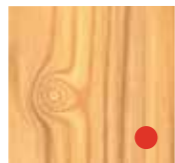
### STENI VISION - WOOD - PINE



**Pine Grey M**  
Scew colour - SN 8020  
Caulk colour - SN 8020\*



**Pine Brown M**  
Scew colour - SN 9202  
Caulk colour - SN 9202\*



**Pine Natural M**  
Scew colour - NCS S 2040-Y20R  
Caulk colour - NCS S 2040-Y20R\*



**Pine white M**  
Scew colour - SN 4012  
Caulk colour - SN 4012\*

### STENI VISION - WOOD - POPLAR



**Poplar Light M**  
Scew colour - NCS S 4040-Y20R  
Caulk colour - NCS S 4040-Y20R\*



**Poplar Grey M**  
Scew colour - SN 8007  
Caulk colour - SN 8007\*



**Poplar Brown M**  
Scew colour - NCS S 6020-Y40R  
Caulk colour - NCS S 6020-Y40R\*



**Poplar Dark M**  
Scew colour - SN 8008  
Caulk colour - SN 8008\*

● The samples indicated with a red dot are available in both 17x24 cm and 10x15 cm. All other samples are available in 10x15 cm only.

\*Caulk colour\* specifies the colour of the sealant in the corners of the L- and U-elements.



## STANDARDPRINT STENI VISION

### STENI VISION - METAL - ALUMINIUM



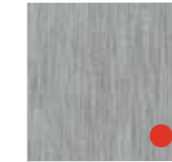
**Aluminium Brown HM**  
Scew colour - SN 9202  
Caulk colour - SN 9202\*



**Aluminium Gold HM**  
Scew colour - NCS S 3050-Y  
Caulk colour - NCS S 35050-Y\*

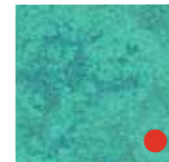


**Aluminium Aged HM**  
Scew colour - NCS S 5020-G90Y  
Caulk colour - NCS S 5020-G90Y\*



**Aluminium Natural HM**  
Scew colour - SN 8004  
Caulk colour - SN 8004\*

### STENI VISION - METAL - COPPER



**Copper Green M**  
Scew colour - SN 5010  
Caulk colour - SN 5010\*



**Copper Aged M**  
Scew colour - SN 9307  
Caulk colour - SN 9307\*



**Copper Natural M**  
Scew colour - SN 9202  
Caulk colour - SN 9202\*



**Copper Brown M**  
Scew colour - NCS S 6020-Y40R  
Caulk colour - NCS S 6020-Y40R\*

### STENI VISION - METAL - CORTEN



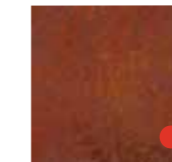
**Corten Light M**  
Scew colour - SN 9202  
Caulk colour - SN 9202\*



**Corten Yellow M**  
Scew colour - SN 9202  
Caulk colour - SN 9202\*



**Corten Orange M**  
Scew colour - SN 9101  
Caulk colour - SN 9101\*

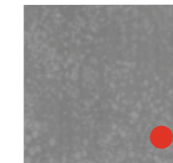


**Corten Rusty M**  
Scew colour - NCS S 6030-Y40R  
Caulk colour - NCS S 6030-Y40R\*

### STENI VISION - METAL - GALVANIZED STEEL



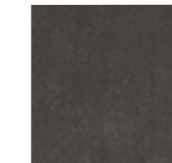
**Steel Light HM**  
Scew colour - SN 8003  
Caulk colour - SN 8003\*



**Steel Grey HM**  
Scew colour - SN 8004  
Caulk colour - SN 8004\*



**Steel Aged HM**  
Scew colour - SN 8007  
Caulk colour - SN 8007\*



**Steel Dark HM**  
Scew colour - SN 8008  
Caulk colour - SN 8008\*

● The samples indicated with a red dot are available in both 17x24 cm and 10x15 cm. All other samples are available in 10x15 cm only.

\*Caulk colour\* specifies the colour of the sealant in the corners of the L- and U-elements.

Steni Vision Standard comes in 64 standard colours. We have one standard gloss degree and can supply two more gloss levels on request. In addition, we can change color shades from our standard collection.

To limit the possibility of pattern repetition on the facade, we have developed many full-format files of each pattern.

Steni Vision is a non-stock item. Full production width of 1,195 mm is always charged.

| Standard panel width | Standard production length |
|----------------------|----------------------------|
| 1195                 | 850-3190                   |

Steni facade panels are delivered with light edges as standard and dark edges as an option at an additional cost.

For a complete overview of available formats, see the tables from page 23 onwards.

### STENI VISION ELEMENT

All Steni Vision standard designs are also available in L- and U-elements. See page 24 for details.

### SAMPLES

All decors are made up of several shades of colours that will be perceived differently depending on the lighting conditions. Inspect the Steni Vision sample(s) outside in normal daylight.



Installation instructions:  
Scan the QR code or visit  
steni.com



# STANDARDPRINT STENI VISION

## STENI VISION - STONE - TRAVERTINE



**Travertine Dark M**  
Scew colour - SN 8007  
Caulk colour - SN 8007\*

**Travertine Beige M**  
Scew colour - SN 4350  
Caulk colour - SN 4350\*

**Travertine Light M**  
Scew colour - SN 4350  
Caulk colour - SN 4350\*

**Travertine Natural M**  
Scew colour - SN 4350  
Caulk colour - SN 4350\*

## STENI VISION - STONE - CHISELED MARBLE



**Marble White M**  
Scew colour - SN 8003  
Caulk colour - SN 8003\*

**Marble Grey M**  
Scew colour - SN 8004  
Caulk colour - SN 8004\*

**Marble Beige M**  
Scew colour - SN 4350  
Caulk colour - SN 4350\*

**Marble Dark M**  
Scew colour - NCS S 6010-Y10R  
Caulk colour - NCS S 6010-Y10R\*

## STENI VISION - STONE - GRANITE



**Granite Dark HM**  
Scew colour - NCS S 6010-Y10R  
Caulk colour - NCS S 6010-Y10R\*

**Granite Beige HM**  
Scew colour - SN 4350  
Caulk colour - SN 4350\*

**Granite Mix HM**  
Scew colour - SN 8008  
Caulk colour - SN 8008\*

**Granite Light HM**  
Scew colour - SN 8003  
Caulk colour - SN 8003\*

## STENI VISION - STONE - CONCRETE



**Concrete Light M**  
Scew colour - SN 8003  
Caulk colour - SN 8003\*

**Concrete Grey M**  
Scew colour - SN 8004  
Caulk colour - SN 8004\*

**Concrete Brown M**  
Scew colour - NCS S 6010-Y10R  
Caulk colour - NCS S 6010-Y10R\*

**Concrete Green M**  
Scew colour - NCS S 6020-G70Y  
Caulk colour - NCS S 6020-G70Y\*

The samples indicated with a red dot are available in both 17x24 cm and 10x15 cm. All other samples are available in 10x15 only.

\*Caulk colour\* specifies the colour of the sealant in the corners of the L- and U-elements.

## STENI STANDARD FESTEMIDLER [syrefast A4]

| Product                     | Dimensions     | No. per pack |
|-----------------------------|----------------|--------------|
| Wood screw*                 | 4,8 x 28/33 mm | 500 pcs.     |
| Metal screw [self-drilling] | 4,8 x 25 mm    | 500 pcs.     |

\*Stocked with untreated heads.  
The screws are supplied with a pan head and a T20 head [see page 19 for a complete overview].

# STANDARDPRINT STENI VISION

## STENI VISION - VARIETY - CURLED PAPER



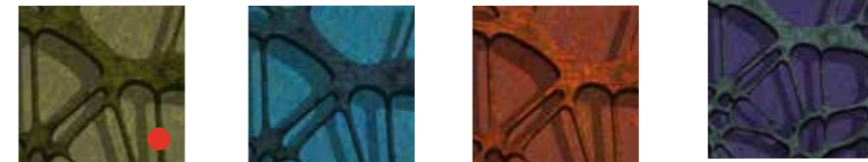
**Curled Light M**  
Scew colour - SN 6510  
Caulk colour - SN 6510\*

**Curled Grey M**  
Scew colour - SN 4072  
Caulk colour - SN 4072\*

**Curled Dark M**  
Scew colour - SN 8007  
Caulk colour - SN 8007\*

**Curled Brown M**  
Scew colour - SN 9202  
Caulk colour - SN 9202\*

## STENI VISION - VARIETY - LAYERS



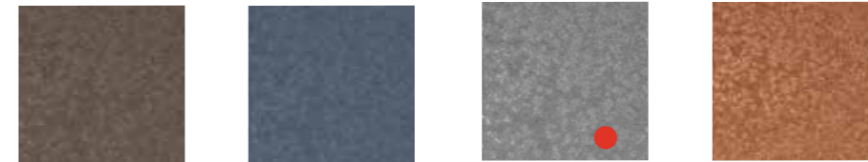
**Layers Green M**  
Scew colour - SN 8008  
Caulk colour - SN 8008\*

**Layers Blue M**  
Scew colour - SN 8007  
Caulk colour - SN 8007\*

**Layers Rusty M**  
Scew colour - SN 8008  
Caulk colour - SN 8008\*

**Layers Purple M**  
Scew colour - SN 8007  
Caulk colour - SN 8007\*

## STENI VISION - VARIETY - SPARKLE



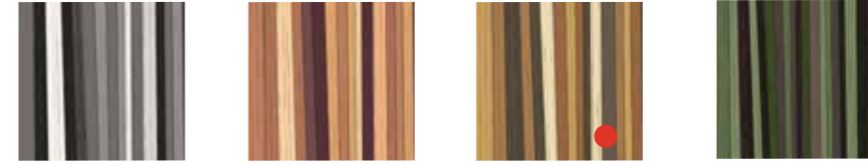
**Sparkle Dark HM**  
Scew colour - SN 8006  
Caulk colour - SN 8006\*

**Sparkle Blue HM**  
Scew colour - NCS S 5010-R50B  
Caulk colour - NCS S 5010-R50B

**Sparkle Grey HM**  
Scew colour - NCS S 3020-Y30R  
Caulk colour - NCS S 3020-Y30R\*

**Sparkle Beige HM**  
Scew colour - NCS S 6020-Y40R  
Caulk colour - NCS S 6020-Y40R\*

## STENI VISION - VARIETY - ZEBRANO



**Zebrano Grey HM**  
Scew colour - SN 8008  
Caulk colour - SN 8008\*

**Zebrano Brown HM**  
Scew colour - SN 9202  
Caulk colour - SN 9202\*

**Zebrano Natural HM**  
Scew colour - SN 9202  
Caulk colour - SN 9202\*

**Zebrano Green HM**  
Scew colour - SN 9307  
Caulk colour - SN 9307\*

The samples indicated with a red dot are available in both 17x24 cm and 10x15 cm. All other samples are available in 10x15 only.

\*Caulk colour\* specifies the colour of the sealant in the corners of the L- and U-elements.

Steni Vision is easy to maintain and quick to install, with minimal waste. The panels are highly environmentally friendly, and thanks to the lifetime warranty of 60 years the total life-cost is the lowest in their class.

We have the opportunity to change colors on all standard Vision patterns at an additional cost.



Take a deep dive into our ocean of surfaces. Use the QR code or see [steni.com](http://steni.com)

The digital print technology that we use in the production of Steni Vision enables you as the customer to create a completely unique effect for your façade.

We work closely with skilled graphic designers who can help you to realise your idea. Our partners can help you with everything from the initial concept to finished, print-ready files. As is normal in the field of graphic design and printing, the printing technology is based on the CMYK colour system.

Visit our website to find out more about how to plan and realise your Vision project. Our experts will help you to achieve a brilliant result!

## STENI VISION GIVES YOU OPPORTUNITIES



**INTEGRATION**  
BLEND IN OR STAND OUT

Adapt your building to its surroundings, or give it a completely different look.



**INFORMATION**  
CLEAR MESSAGES

Clear information helps people to decide. Make it clear: who, what, where and why.



**IDENTITY**  
A PERSONAL TOUCH

Accentuate your building – give it a unique personality



**ILLUSION**  
AESTHETIC TRICKS

Things aren't always what they seem. Optical illusions provide a powerful way in which to highlight architectural expressions.

Steni Vision is easy to maintain and quick to install, with minimal waste. The panels are highly environmentally friendly, and thanks to the lifetime warranty of 60 years the total life-cycle cost is the lowest in their class.

### WANT A PARTICULAR PATTERN?

Specific formats and requirements apply. Get in touch with your local sales rep for more information and assistance.

### ONE WALL = ONE DESIGN

A single image can be divided up to cover all or part of the façade!

### DIGITAL PRINTING

Steni Vision has a surface that is produced using digitalprinting technology. This gives you, as a designer, a unique opportunity to create an individual look in an easy, modern manner.



See also our brochure: Designs & Patterns

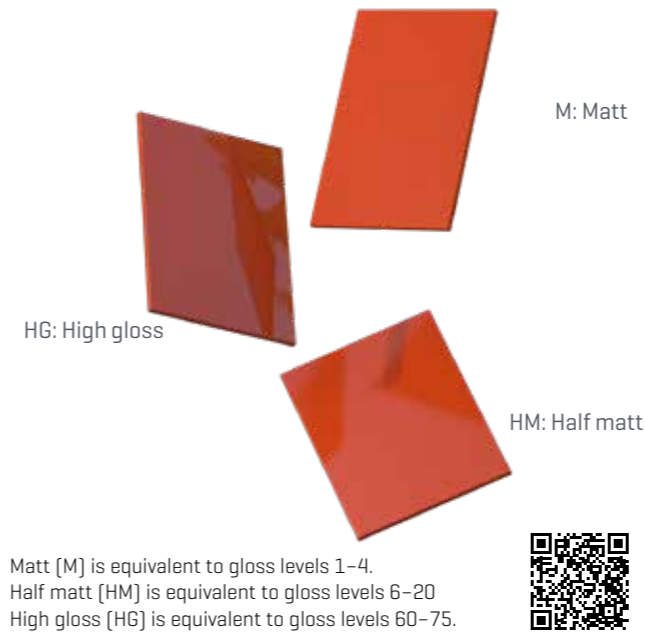


Be inspired! Download our façade brochure here or from steni.com

# GLOSS LEVELS

With our gloss levels, you can use the light to expand the colour palette and let nature create new effects every day.

STENI COLOUR AND VISION ARE AVAILABLE IN THREE DIFFERENT GLOSS LEVELS





# STENI NATURE 60<sup>Y</sup>

A strong and natural façade panel with a surface of crushed natural stone.

## STENI NATURE STOCKED COLOURS



Steni Nature stocked formats:  
1,195 × 2,995 mm.  
Full production width of 1195 mm is always charged.

Screw colours refer to colour codes for Steni Colour (see Steni Colour chart on page 6).

## STENI STANDARD FASTENERS (acid-resistant A4)

| Product                     | Dimensions     | No. per pack |
|-----------------------------|----------------|--------------|
| Wood screw*                 | 4.8 × 28/33 mm | 500 pcs      |
| Metal screw (self-drilling) | 4.8 × 25 mm    | 500 pcs      |

\* Stocked with untreated heads, and with painted heads in stock panel colours.  
The screws are supplied with a pan, T20 head (see page 19 for a complete overview).

### BATCHES

Colour differences may occur between different production so consider this when you order panels.

## STANDARD PRODUCTION FORMATS (mm)

Minimum 30 m<sup>2</sup> per division.

| Standard panel divisions* | Standard production length |
|---------------------------|----------------------------|
| 295 + 295 + 295 + 295     | 1195-3495                  |
| 395 + 395 + 395           | 850-3495                   |
| 595 + 595                 | 850-3495                   |
| 1195**                    | 850-3495                   |

\* All panels split from the same full-width panel must be of the same length.  
\*\*No minimum quantity for 1195 mm width.

For a complete overview of available formats, see the tables from page 22 onwards.  
Other formats may be produced at an additional cost. Minimum panel width is 196 mm.

Steni delivers L- and U-elements (ref. p. 25)

### HIGH FIRE CLASS

Steni Nature Coarse has A2-s1.d0 fire classification (ref our technical datasheet).

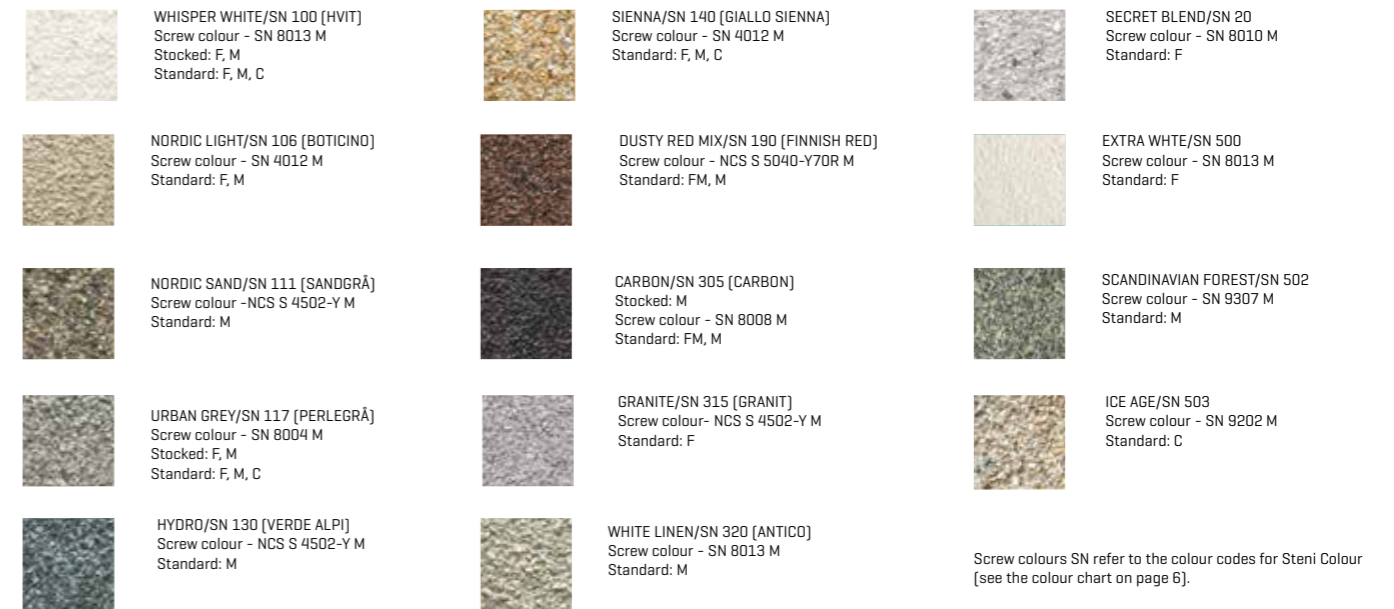
Steni Nature is easy to maintain and quick to install, with minimal waste. The panels are highly environmentally friendly, and thanks to their expected lifetime of over 60 years the total life-cycle cost is the lowest in their class.

Steni Nature is a fibreglass-reinforced stone composite panel suitable for use as external cladding on all types of buildings. The panels should be installed in accordance with our installation instructions.

Steni Nature is available in a multitude of surfaces, stone grades and formats. The panels blend in with the natural environment, making the timeless design an excellent alternative to plaster or brick.



## STENI NATURE – STANDARD COLOURS



Screw colours SN refer to the colour codes for Steni Colour (see the colour chart on page 6).

## STENI NATURE GLASS

A strong and natural façade panel with a surface of broken glass.



FM: Fine Micro



F: Fine



M: Medium



C: Coarse

Images are not 1:1 scale

### CAN'T FIND WHAT YOU'RE LOOKING FOR?

Steni Nature can be ordered with special stone or in a special grade. In that case, our laboratory must approve the type of stone in advance and ensure that the grade chosen is suitable for production. This will result in a unique production run that will give your façade the unique and robust look that you want. Our standards of quality and precision are just as stringent for special orders as they are for our standard colours, but we cannot guarantee that the same type of stone will be available in the future. Please take this into consideration when calculating the size of your order.



See how easy it is to remove graffiti from STENI Nature.



Find out more about Nature: Scan the QR code or visit steni.com



See our reference projects. Scan the QR code or visit steni.com

# terra by STENI® 25<sup>Y</sup>



A robust and natural foundation panel with a surface of crushed natural stone.

## TERRA BY STENI – STANDARD COLOURS



SN 100 – White  
Screw colour – SN 8013 M



SN 201 – Grey  
Screw colour – SN 8004 M



SN 305 – Black  
Screw colour – SN 8008 M

Screw colours refer to colour codes for Steni Colour (see Steni Colour chart on page 6).

## STANDARD PRODUCTION FORMATS [mm]

TERRA by Steni is supplied undrilled.

| Panel width | Panel length | No. per pallet |
|-------------|--------------|----------------|
| 1195        | 2395         | 50             |
| 595         | 2395         | 100            |
| 595*        | 1195         | 140            |

\*595x1195 not stocked in SN 100

## STENI STANDARD FASTENERS [acid-resistant A4]

| Product                    | Dimensions  | No. per pack |
|----------------------------|-------------|--------------|
| Wood screw powder-coated M | 4.0 × 28 mm | 200          |

The screws are supplied with a pan, R1 square head, painted grey, white or black. Stocked with painted heads in stocked panel colours.

## BATCHES

Colour differences may occur between different production so consider this when you order panels.

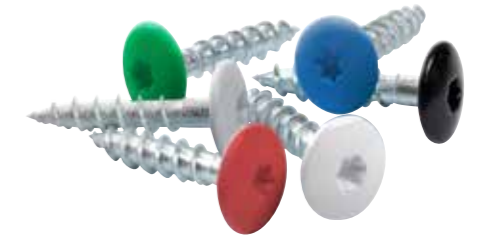
# ORIGINAL ACCESSORIES

Our products are fully tested, so you can be sure that all of the components will work together, the installation will go smoothly, and the desired result will be achieved.

## STENI STANDARD WOOD SCREWS [ACID-RESISTANT A4, PAN HEAD, TORX 20]

| Product            | Stock | Dimensions  | No. per pack |
|--------------------|-------|-------------|--------------|
| Plain, untreated   | X     | 4.8 × 28 mm | 500 pcs      |
| Painted high gloss | X     | 4.8 × 28 mm | 500 pcs      |
| Painted matt       | X     | 4.8 × 28 mm | 500 pcs      |
| Painted matt       | X     | 4.0 × 28 mm | 200 pcs*     |
| Plain, untreated   | X     | 4.8 × 33 mm | 500 pcs      |
| Painted high gloss | X     | 4.8 × 33 mm | 500 pcs      |
| Painted matt       | X     | 4.8 × 33 mm | 500 pcs      |

\* Screws for Terra by STENI are supplied in packs of 200.



New and better screws! Now with even better traction!



Screws for TERRA by STENI

## STENI SELF-DRILLING SCREW (RTB) FOR STEEL AND ALUMINIUM [ACID-RESISTANT A4, PAN HEAD, TORX 20]

| Product            | Dimensions  | No. per pack |
|--------------------|-------------|--------------|
| Plain, untreated   | 4.8 × 25 mm | 500 pcs      |
| Painted high gloss | 4.8 × 25 mm | 500 pcs      |
| Painted matt       | 4.8 × 25 mm | 500 pcs      |

## SCREWS

Screws for wooden substructure are stocked in colours matching stocked panels. The colours of screws may deviate from the colours of panels

## CAN'T FIND WHAT YOU'RE LOOKING FOR?

All Steni screws are available with painted heads. The colour charts show the recommended screw colours for all standard products. Painted screws are stocked for all stocked panel variants. We can also supply painted screws to match most NCS and RAL colour codes. Our joint and corner profiles are also available painted black, white or natural [anodised] aluminium. Other colours are also available on request.

Terra by STENI is a fibreglass-reinforced stone composite panel suitable for use as external facing on foundation walls.



Find out more about Terra: Scan the QR code or visit [steni.com](http://steni.com)

Terra by STENI is available in three colours.



See our reference projects. Scan the QR code or visit [steni.com](http://steni.com)

Terra by STENI is very easy to cut and install, enabling you to refresh old foundation walls with a maintenance-free surface that will last for years.



See how easy it is to install Terra by STENI. Download the video here.

## STENI EPDM

| Product              | Dimensions             | Colour [NCS code]   |
|----------------------|------------------------|---------------------|
| EPDM, rubber polymer | 70 mm × 25 m per roll  | Black [S 9000-N]    |
| EPDM, rubber polymer | 70 mm × 25 m per roll  | Grey [S 6000-N]     |
| EPDM, rubber polymer | 70 mm × 25 m per roll  | White [S 1005-Y20R] |
| EPDM, rubber polymer | 95 mm × 25 m per roll  | Black [S 9000-N]    |
| EPDM, rubber polymer | 95 mm × 25 m per roll  | Grey [S 6000-N]     |
| EPDM, rubber polymer | 95 mm × 25 m per roll  | White [S 1005-Y20R] |
| EPDM, rubber polymer | 120 mm × 25 m per roll | Black [S 9000-N]    |
| EPDM, rubber polymer | 120 mm × 25 m per roll | Grey [S 6000-N]     |
| EPDM, rubber polymer | 120 mm × 25 m per roll | White [S 1005-Y20R] |

## TOUCH-UP PEN

| Product         | Colour      | Quantity,pr package                       |
|-----------------|-------------|---|
| Uni Paint PX 30 | Dark Colour | 1 piece. [covers about 100 m panel edge]. |

This is a felt-tip pen to be used for repairing / improving edges of panels at the building site. Follow the procedure for using the Touch-up pen [to be found on our website [www.steni.com](http://www.steni.com)]. There is no warranty or right to claim for the use and/or result of the use of the touch-up pen.

## STENI BITS, SAW BLADES AND CUTTING DISCS

| Product  | Dimensions         | No. per pack |
|--|--------------------|--------------|
| Steni Multiconstruction drill bit<br>Steni Terra                 | Ø5,5 × 85 mm       | 1 pc         |
| Steni Multiconstruction drill bit,<br>Steni Colour/Vision/Nature | Ø6,5 × 100 mm      | 1 pc         |
| Steni Jigsaw blade<br>T-tang                                     | 100 mm             | 1 pc         |
| Cutting disc for Steni   | Ø150 × 2,6 × 30 mm | 1 pc         |
| 30 mm bushing  | Ø30/25,4 × 2,6 mm  | 1 pc         |
| 30 mm bushing  | Ø30/22,2 × 2,6 mm  | 1 pc         |
| 30 mm bushing  | Ø30/20,0 × 2,6 mm  | 1 pc         |

## STENI TOOLBOX

| Product  | Dimensions         | No. per pack                              |
|--|--------------------|---|
| Steni toolbox with accessories                                   | 360x440x250 mm     | 1 pc                                      |
| Cutting disc for Steni   | Ø150 × 2,6 × 30 mm | 1 pc                                      |
| Steni Multiconstruction drill bit,<br>Steni Colour/Vision/Nature | Ø6,5 × 100 mm      | 1 pc                                      |
| Steni Jigsaw blade<br>T-tang                                     | 100 mm             | 1 pc                                      |
| UniPaint PX-30   | Dark Colour        | 1 piece. [covers about 100 m panel edge]. |
| Steni Facade cleaner   |                    | 1 pc                                      |
| Microfiber Cloth   | 40 x 40 cm         | 1 pc                                      |
| Spacer Block   | 5 mm               | 1 pc                                      |



## STENI ALUMINIUM CORNER AND JOINT PROFILES

| PRODUCT  | INTENDED USE (MM)   | COLOUR                 | LENGTH (M) |
|--|---|------------------------|------------|
| Horizontal Joint profile:<br>HFP 7-30            | Steni façade panels<br>(single panel thickness)             | Natural (anodised) 15µ | 3.0        |
|  |   | White [RAL 9010]       | 3.0        |
|  |   | Black [RAL 9005]       | 3.0        |
| Horizontal Joint profile:<br>HP 7-30             | Steni Colour/Vision/Nature F/FM<br>(single panel thickness) | Natural (anodised) 15µ | 3.0        |
|  |   | White [RAL 9010]       | 3.0        |
|  |   | Black [RAL 9005]       | 3.0        |
| Vertical Joint profile:<br>FP 6-30               | Steni façade panels<br>(single panel thickness)             | Natural (anodised) 15µ | 3.0        |
|  |   | White [RAL 9010]       | 3.0        |
|  |   | Black [RAL 9005]       | 3.0        |
| Vertical profile external corner:<br>CP 15-13    | Steni façade panels<br>(single panel thickness)             | Natural (anodised) 15µ | 3.0        |
|  |   | White [RAL 9010]       | 3.0        |
|  |   | Black [RAL 9005]       | 3.0        |
| Vertical profile external corner:<br>CP 15-18-33 | Steni façade panels<br>(single panel thickness)             | Natural (anodised) 15µ | 3.0        |
|  |   | White [RAL 9010]       | 3.0        |
|  |   | Black [RAL 9005]       | 3.0        |
| Vertical profile external corner:<br>CP 15-25-40 | Steni façade panels<br>(double panel thickness)             | Natural (anodised) 15µ | 3.0        |
|  |   | White [RAL 9010]       | 3.0        |
|  |   | Black [RAL 9005]       | 3.0        |

Painted in other colours by request.



## DO YOU WANT TO ADHERE YOUR FACADE WITH ADHESIVE?

Our partners have tested and approved adhesive systems adapted to our Steni Colour facade panel. The products must be purchased directly from the distributors. Installation instructions for approved adhesive systems can be downloaded by scanning the QR code on the right side.



Installation instructions:  
Scan the QR code or visit  
[steni.com](http://steni.com)



# FORMATS AND DRILLING

## ABOUT THE FORMAT TABLES

The panels are produced as a continuous sheet that is initially cut into lengths of 850–3,495 mm. These full-width panels are then divided in accordance with the widths stated in the format tables. Therefore, each full-width panel can only be divided into smaller panels of the same length. There is no required minimum order size for split panels of the same length within each full-width panel. However, the total quantity of the split panels must add up to the area of the full-width panel concerned [see diagram].

If divisions that do not meet the minimum-quantity requirement are ordered, we will attempt to produce these as custom formats. If even this is not possible, the panels will be supplied full-width, and must be adapted on the construction site. Any such panels will be supplied along with a drawing showing how they should be cut with minimal waste.

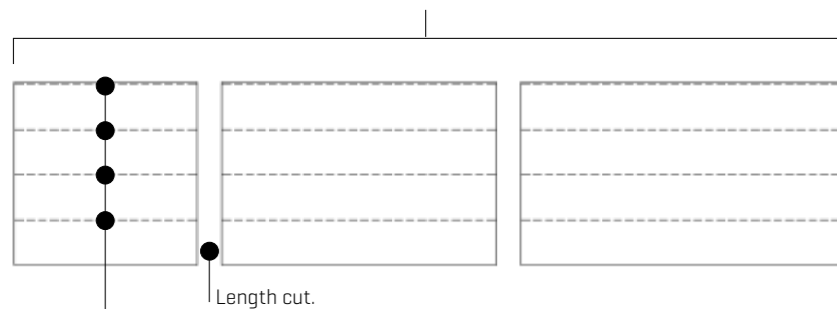
An optimal production requires that the number of split panels always adds up to the full-width panel produced. Unfortunately, in some cases parts of the full-width panel cannot be used. There are three things in particular that will affect this.

- Choice of width format
- Variation in length format
- Splitting up of the order



Steni is committed to supplying sustainable solutions that make better use of our resources and reduce the strain on the environment. By discussing your project with us at an early stage, you as a customer can help us in this important work and also help to reduce your project costs.

Same panel division, but different panel lengths. The total area must satisfy the minimum quantity.



Splitting full-width panel (here 4 × 295 mm): see the panel division column in the tables below for possible configurations. All panels split from the same full-width panel will always be of the same length. The minimum quantities in the tables refer to this division.

## PRODUCTION FORMATS FOR STENI COLOUR

### STANDARD PRODUCTION FORMATS [mm]

Minimum 10 m<sup>2</sup> per division.

| STANDARD PANEL DIVISIONS* | STANDARD PRODUCTION LENGTHS | CUSTOM PANEL DIVISIONS | CUSTOM PRODUCTION LENGTHS | MAX. NUMBER OF PANELS SPLIT FROM A FULL-WIDTH PANEL |
|---------------------------|-----------------------------|------------------------|---------------------------|---|
| 295 + 295 + 295 + 295     | 1195–3495                   | 292–294                | 1195–3495                 | Full width of the panel is divided into 4 formats   |
| 395 + 395 + 395           | 1020–3495                   | 292–605                | 1195–3495                 | Full width of the panel is divided into 3 formats   |
| 595 + 295 + 295           | 1195–3495                   | 292–901                | 1195–3495                 | Full width of the panel is divided into 2 formats   |
| 595 + 595                 | 850–3495                    | 596–1194               | 1195–3495                 | Full width of the panel is divided into 1 format    |
| 795 + 395                 | 1020–3495                   |                        |                           |   |
| 895 + 295                 | 1195–3495                   |                        |                           |   |
| 1195**                    | 850–3495                    |                        |                           |   |

\* All panels split from the same full-width panel must be of the same length (see diagram).  
\*\* No minimum quantity for 1195 mm width.

Other formats may be produced at an additional cost. Minimum panel width is 196 mm. Steni Colour stocked formats: 1195 × 2995 mm. Full production width of 1195 mm is always charged. Waste < 150mm will be discarded. Formats may be pre-drilled according to our standard drill patterns [ref QR code on the bottom of page 23].

## PRODUCTION FORMATS FOR STENI NATURE

### STANDARD PRODUCTION FORMATS [mm]

Minimum 30 m<sup>2</sup> per division.

### CUSTOM PRODUCTION FORMATS [mm]

Minimum 30 m<sup>2</sup> per division.

| Standard panel divisions* | Standard production length | Custom panel divisions* | Custom production length | Note  |
|---------------------------|----------------------------|-------------------------|--------------------------|---|
| 295 + 295 + 295 + 295     | 1195–3495                  | 292–294                 | 1195–3495                | Full width of the panel is divided into 4 formats |
| 395 + 395 + 395           | 850–3495                   | 292–605                 | 1195–3495                | Full width of the panel is divided into 3 formats |
| 595 + 595                 | 850–3495                   | 292–901                 | 1195–3495                | Full width of the panel is divided into 2 formats |
| 1195**                    | 850–3495                   | 596–1194                | 1195–3495                | Full width of the panel is divided into 1 format  |

\* All panels split from the same full-width panel must be of the same length.  
\*\* No minimum quantity for 1,195 mm width.

Other formats may be produced at an additional cost. Minimum panel width is 196 mm. Steni Nature stocked formats: 1195 × 2995 mm. Full production width of 1195 mm is always charged. Formats may be pre-drilled according to our standard drill patterns [ref QR code on the bottom of this page].

## PRODUCTION FORMATS FOR STENI VISION

### STANDARD PRODUCTION FORMATS [mm]

### CUSTOM PRODUCTION FORMATS [mm]

All custom production formats are treated as Steni Vision Custom and will therefore be charged with additional cutting cost.

| Standard panel divisions | Standard production length | Custom panel divisions | Custom production length | Note  |
|--------------------------|----------------------------|------------------------|--------------------------|---|
| 1195                     | 850–3190                   | 292–294                | 850–3190                 | Full width of the panel is divided into 4 formats |
|                          |                            | 292–605                | 850–3190                 | Full width of the panel is divided into 3 formats |
|                          |                            | 292–901                | 850–3190                 | Full width of the panel is divided into 2 formats |
|                          |                            | 596–1,194              | 850–3190                 | Full width of the panel is divided into 1 format  |
|                          |                            | 295 + 295 + 295 + 295  | 850–3190                 |   |
|                          |                            | 395 + 395 + 395        | 850–3190                 |   |
|                          |                            | 595 + 295 + 295        | 850–3190                 |   |
|                          |                            | 595 + 595              | 850–3190                 |   |
|                          |                            | 795 + 395              | 850–3190                 |   |
|                          |                            | 895 + 295              | 850–3190                 |   |

Steni Vision is a non-stock item. Full production width of 1195 mm is always charged. Formats may be pre-drilled according to our standard drill patterns [ref QR code on the bottom of this page].



Download our standard drilling templates. Scan the QR code or visit steni.com

## PRE-DRILLING PANELS

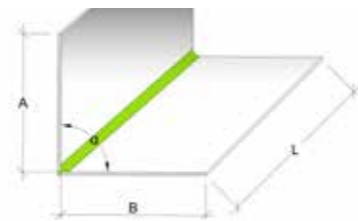
All standard production format panels can also be supplied pre-drilled. In addition, most custom production formats can be pre-drilled, except STENI Vision. Pre-drilling follows our standard drilling templates [see our website].

# STENI COLOUR AND STENI VISION DESIGN ELEMENTS

Steni Vision design elements here refers only to standard print designs. All items are delivered undrilled. NB: All dimensions are internal dimensions.

## L-ELEMENT

| $\alpha AB$ [°] | A (mm)    | B (mm)    | A+B (mm)    | Length (mm) |
|-----------------|-----------|-----------|-------------|-------------|
| 70 - 150        | 60 - 1192 | 60 - 1192 | 120 - 700   | 100 - 3495* |
|                 |           |           | 701 - 800   | 100 - 3000  |
|                 |           |           | 801 - 1000  | 100 - 2400  |
|                 |           |           | 1001 - 1250 | 100 - 2000  |
|                 |           |           | 1251-1600   | 100 - 1500  |

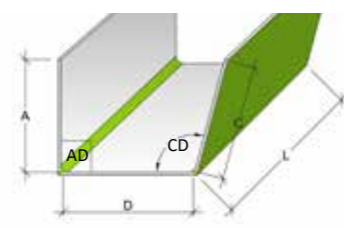
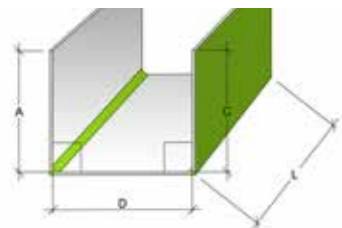


\* The maximum length of Steni Vision elements is 3190 mm  
The maximum length of non-90° elements is 3300 mm  
Total price for elements = Production cost per. lm. (min. price 1 meter) + panel price per m2.

## U-ELEMENT

| $\alpha AD$ [°] | $\alpha CD$ [°] | A (mm)   | D (mm)     | C (mm)   | A+D+C (mm)  | Length (mm) |
|-----------------|-----------------|----------|------------|----------|-------------|-------------|
| 90 - 150        | 90 - 150        | 60 - 592 | 100 - 1187 | 60 - 592 | 220 - 700   | 100 - 3495* |
|                 |                 |          |            |          | 701 - 800   | 100 - 3000  |
|                 |                 |          |            |          | 801 - 1000  | 100 - 2400  |
|                 |                 |          |            |          | 1001 - 1250 | 100 - 2000  |
|                 |                 |          |            |          | 1251 - 1600 | 100 - 1500  |

\* The maximum length of Steni Vision elements is 3190 mm  
Total price for elements = Production cost per. lm. (min. price 1 meter) + panel price per m2.



Please remember that elements will be described as follows in order confirmations:

For L-elements: Wing A / Wing B x Length A / Length B - Angle

For U-elements: Wing A / Base D / Wing C / Length / Angle AD / Angle CD

To avoid any misunderstandings, please specify element dimensions in your purchase order the same way as above.?

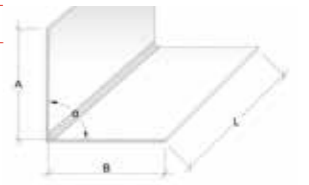
# STENI NATURE DESIGN ELEMENTS

Steni Nature design elements provide smooth, even corners. All items are delivered undrilled. NB: All dimensions are internal dimensions.

## L-ELEMENT $\alpha = 90^\circ$

| A (mm)   | B (mm)   | A+B (mm)   | Length fine (mm) | Length medium (mm) | Length coarse (mm) |
|----------|----------|------------|------------------|--------------------|--------------------|
| 60 - 594 | 60 - 794 | 120 - 290  | 100 - 3495       | 100 - 2995         | 100 - 2995         |
|          |          | 291 - 588  | 100 - 3200       | 100 - 2500         | 100 - 2500         |
|          |          | 589 - 788  | 100 - 2995       | 100 - 2500         | 100 - 2000         |
|          |          | 798 - 1188 | 100 - 1500       | 100 - 1500         | -                  |

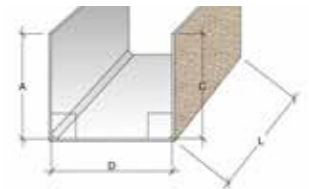
Total price for elements = Production cost per. lm. (min. price 1 meter) + plate price per m2.



## U-ELEMENT $90^\circ+90^\circ$

| A (mm)   | D (mm)    | C (mm)   | A+D+C (mm) | Length fine (mm) | Length medium (mm) |
|----------|-----------|----------|------------|------------------|--------------------|
| 60 - 145 | 120 - 592 | 60 - 145 | 240 - 882  | 100 - 2995       | 100 - 2995         |
| 60 - 594 | 120 - 592 | 60 - 594 | 240 - 1184 | 100 - 2395       | 100 - 2395         |

Total price for elements = Production cost per. lm. (min. price 1 meter) + panel price per m2.



# HANDLING UTILITIES

For a simple and safe handling of panels on the building site, we recommend that you use appropriate handling utilities.

Examples of handling utilities.



Spacer Block 5mm.



Glass vacuum lifter



Spacer Block for profile.

## HEALTH AND SAFETY IS IMPORTANT

Frequent and heavy lifting is a strain on the body. Follow the recommendations of the local labour inspection authority.

# ADVICE FOR PURCHASERS

## BUY STENI

Steni only sells through building material dealers. If you are a private individual, you should contact your local supplier of building materials. If you are working on major projects requiring more follow-up, please contact one of our sales teams directly or scan the QR code below.

## STOCK ITEMS

If you order one of our stock items, your order will normally be shipped within two weeks.

## WHAT YOU GET

All our products are delivered on pallets, securely packed with protective plastic and straps. Each pallet is labelled with product and order numbers. Each pallet has a packing list providing information about its contents and brief instructions about storage and handling on site, as well as the necessary acceptance inspection.

There will also be information about where you can download installation instructions in your language.

Please remember that you will need to have a forklift truck available to unload the delivery at the construction site. If you do not have a forklift truck, a lorry crane will have to be ordered.

## WHAT TO CONSIDER

Firstly, as a customer you must decide which products you want and what you want the façade to look like. The formats, colours and composition you choose have a great bearing on the result in terms of both appearance and total cost. If you cannot use our standard formats, we recommend that you contact your local sales representative, who will be able to help you so that together we can find the best solution for your project.

During this process, we will also consider the choice of colour and gloss level, how on-site logistics will be handled, and various other aspects that you as a customer will have to decide on when you purchase custom formats from us. A phone call to us at an early stage can save you a lot of work, time and cost later in the process.

You should order via your local supplier of construction products or through one of our sales team. STENI will be happy to help you to set up your order and thereby ensure that we understand your needs. For more information, refer to our sales and delivery terms.



Book a project meeting  
(follow the QR code).

# STENI AROUND THE WORLD

Developing and manufacturing high-quality façades in Larvik, Norway since 1965.

Our products have been developed in the most demanding climate, and every day all over the world our façade panels are tested against the wind and weather, sun and rain and temperature fluctuations.

We have developed our products based on decades of experience and feedback, and today we can offer façade panels with a number of unique product advantages and a 60-year functional warranty.

Steni panels are both eco-friendly and pollution-resistant. Robust yet lightweight. Fireproof and frost-resistant. They keep their colour, and moisture just runs off. We call this Steni quality.

Today, we have sales companies and distributors throughout Europe, North America and the Middle East, and Steni façade panels protect and adorn buildings all over the world.



**Steni AS:**  
Head office [HO] and production  
Lågendalsveien 2633  
NO-3277 Steinsholt, Norway

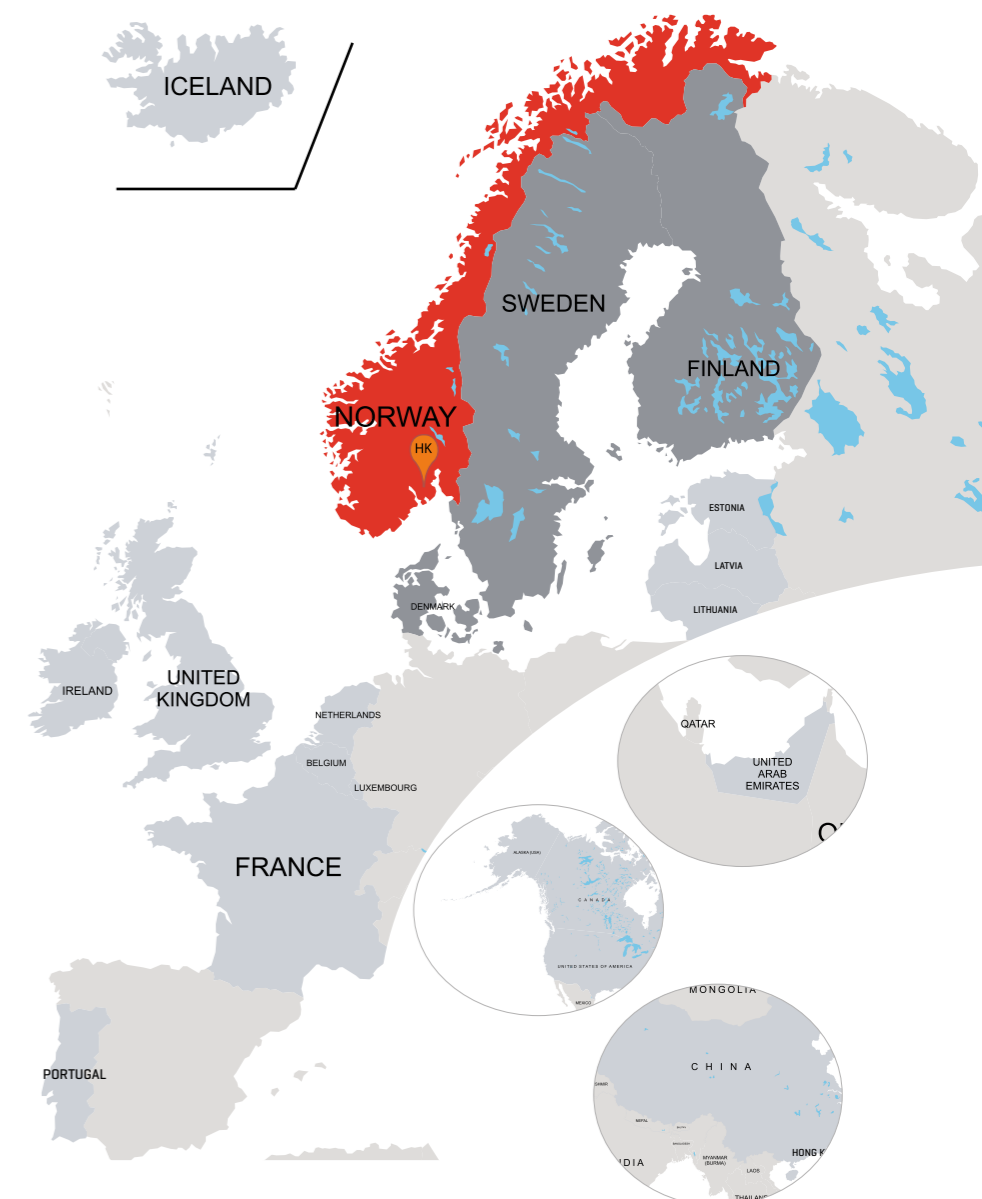


**Steni sales companies**  
Norway  
Sweden  
Denmark  
Finland



**Steni distributors**  
Canada  
China  
France  
UK  
Hong Kong  
Israel  
Iceland  
Korea  
Latvia/Lithuania  
Mexico  
Belgium/Netherlands/Luxembourg  
Portugal  
US

Sales to other countries are handled by our export department in Norway.





## LASTING EXPRESSIONS

STENI NORWAY [international]  
Head office/Factory/Store outlet  
Lågendalsveien 2633  
NO-3277 Steinsholt  
Norway  
E: info@steni.no  
T: +47 33 15 56 00

### STENI SWEDEN

Första Långgatan 22  
413 28 Gothenburg  
Sweden  
E: info@steni.se  
T: +46 [0] 31 706 08 50

### STENI DENMARK

Bækkeskovvej 5, 1. sal  
2665 Vallensbæk  
Denmark  
E: steni@steni.dk  
T: +45 70 27 01 22

### STENI FINLAND

Vanha Helsingintie 18 B  
00700 Helsinki  
Finland  
E: myynti@steni.fi  
T: +358 [0]9 855 3420