



**DUTCH
DESIGN**
by Metadecor

REMARKABLE FACADES



metadecor





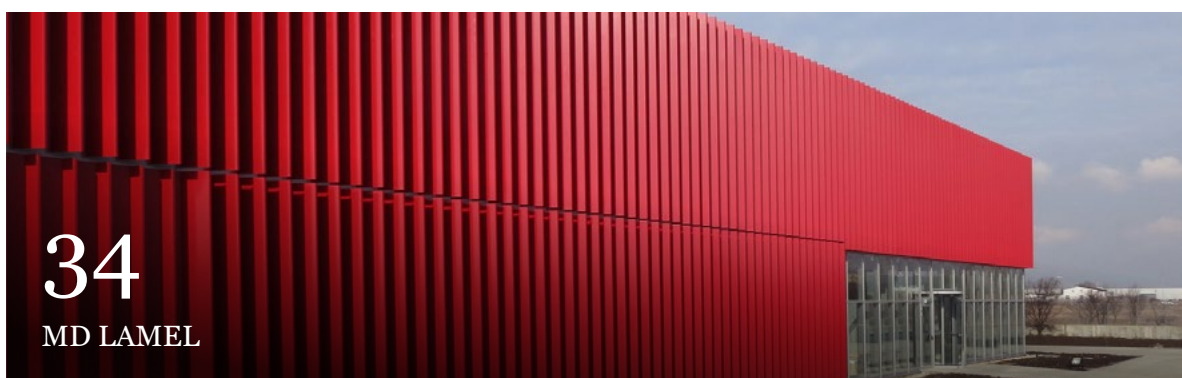
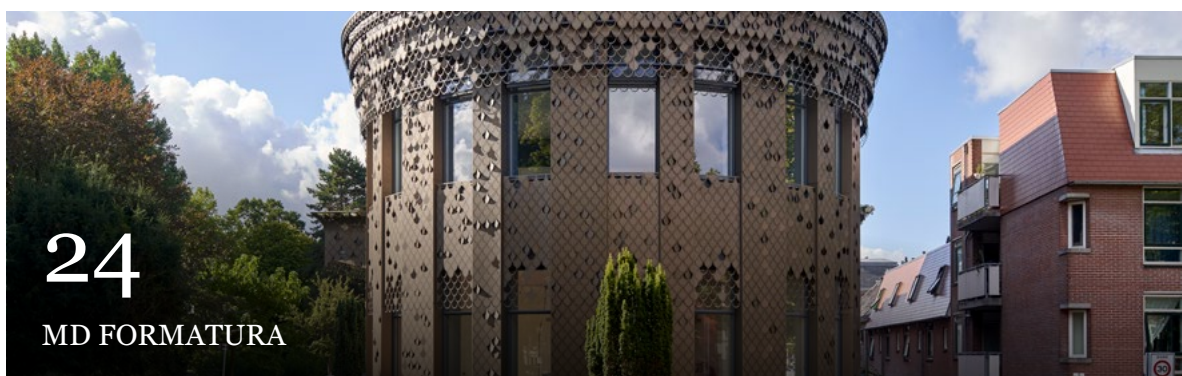
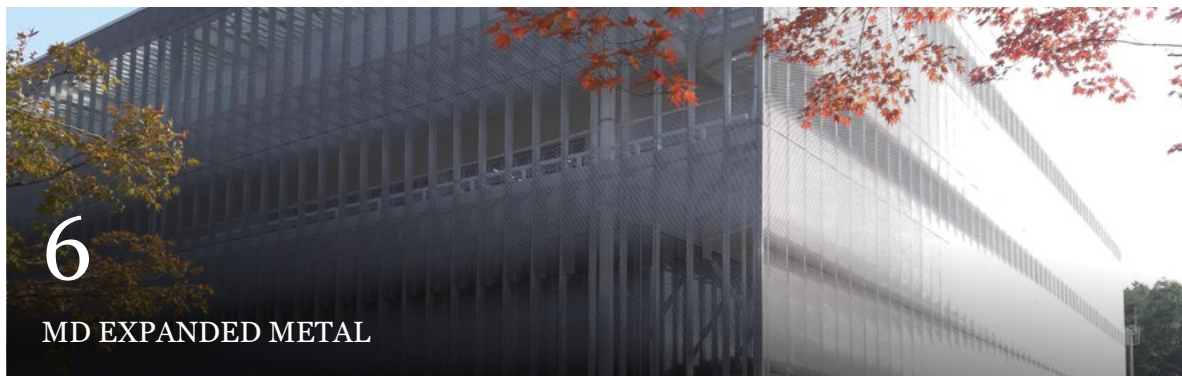
metadecor

Together we make unique façades worldwide. A cool façade that goes beyond a façade only. Together we create a unity between an architectural building and its living and working environment.

Metadecor does this with a team of experienced and enthusiastic employees. We are inventive and have a healthy dose of self-confidence and that yields unique architectural buildings that are future-proof.

We want to keep processes simple for you as client. We value personal contact and we do what we say. We are lively and uninhibited, looking for technical challenges for that unique end result of our project.

CONTENT



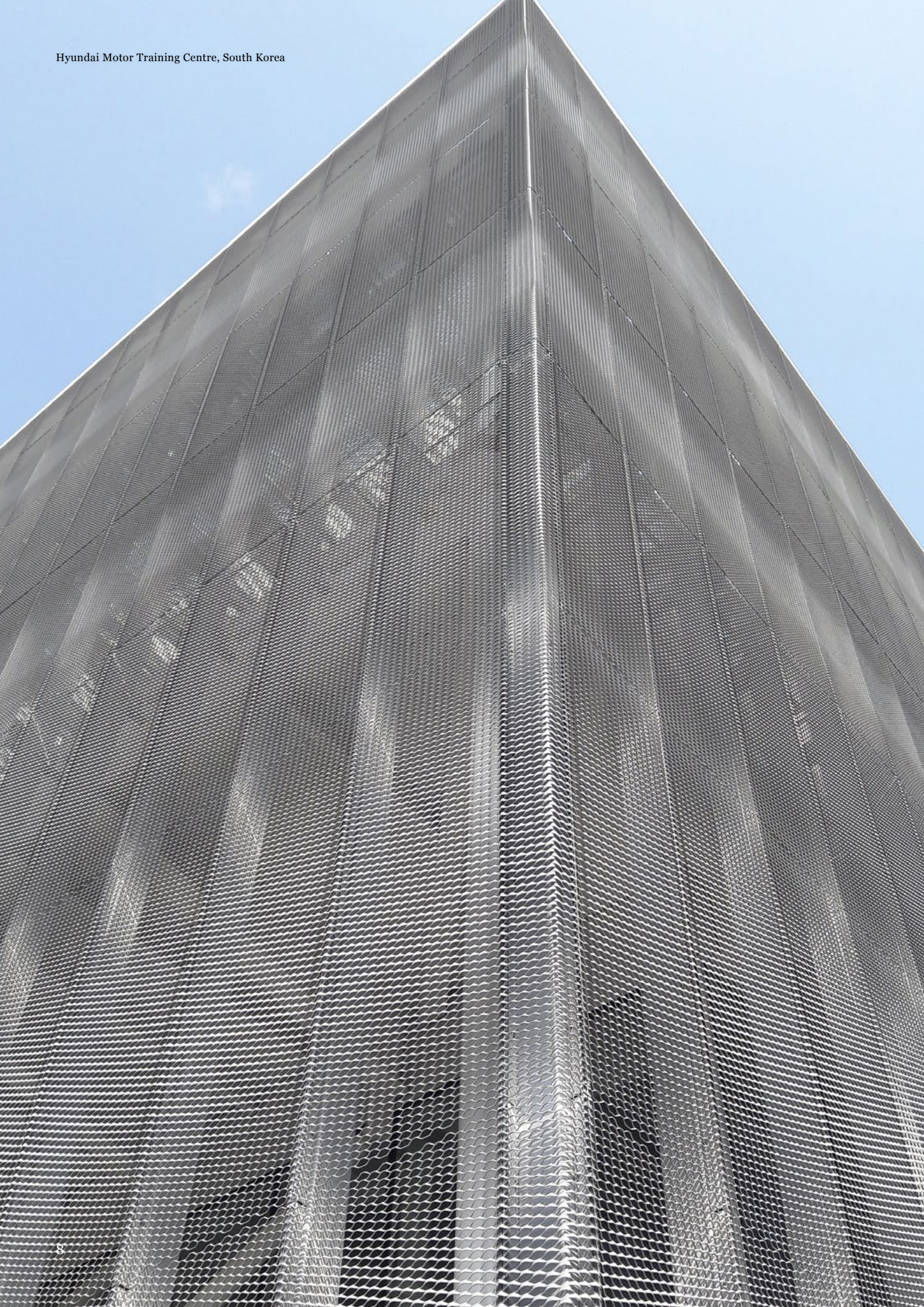


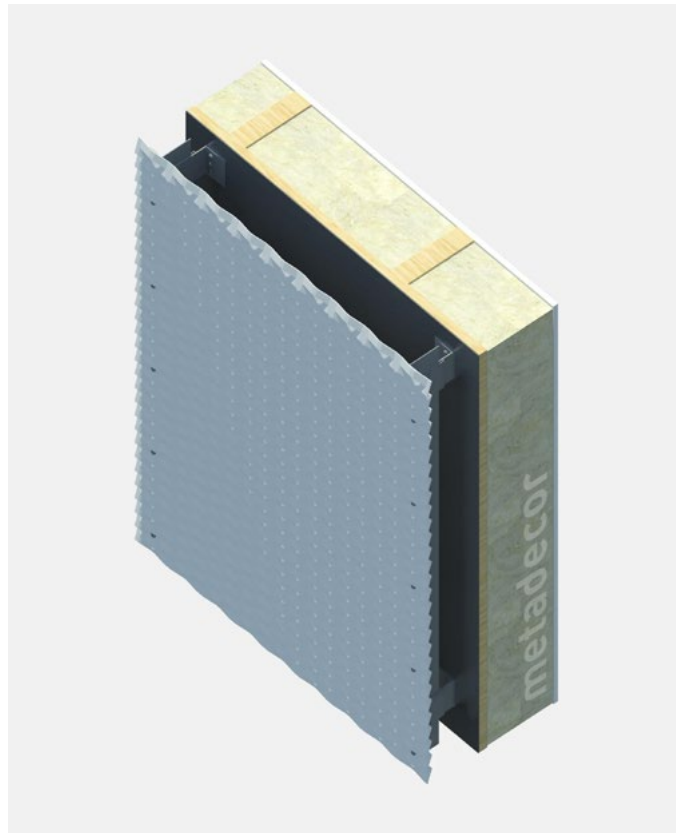
HYUNDAI MOTOR TRAINING CENTRE, SOUTH KOREA

MD EXPANDE

A photograph of a modern building with a facade made of perforated metal panels. The building has multiple stories with windows visible through the perforations. In the top left corner, there is a branch with bright red autumn leaves. At the bottom, there is a white concrete wall and some green shrubbery. The text "D METAL" is overlaid in the center-left.

D METAL





MD Expanded metal

MD Expanded metal is made by partially incising and deforming a metal plate. This creates diamond-shaped openings that give a façade a transparent appearance. It is also called stretch metal or stretched metal. MD Stretch metal is an economic product because during manufacturing no material is lost.



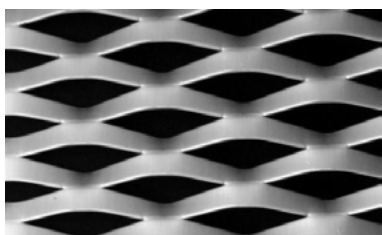




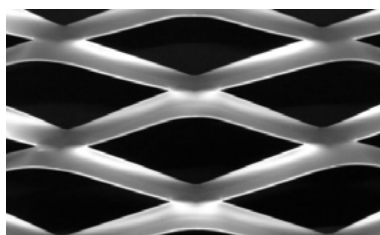


Patterns

We can vary endlessly in the diagonals and the width of the dart?
This makes MD Expanded Metal a product with a versatile character.



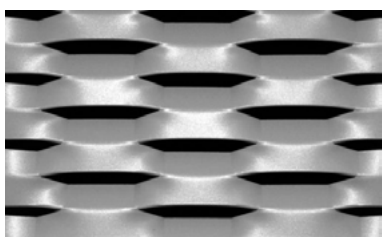
MD AIRPORT



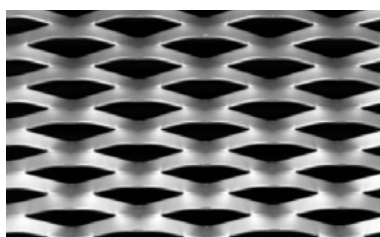
MD COLISEUM



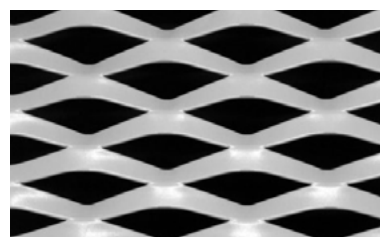
MD DELTA



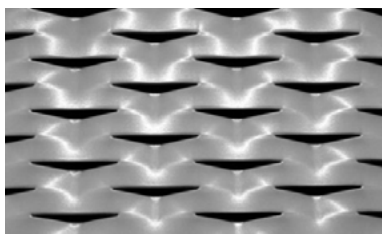
MD ESPERIA



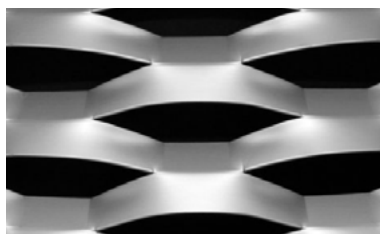
MD FILS5



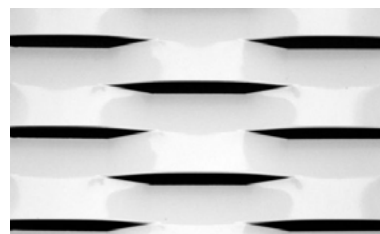
MD GATE



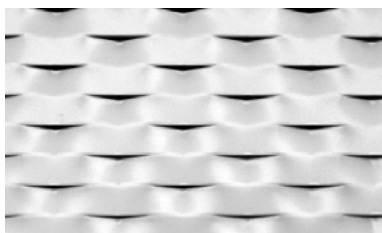
MD IDEA



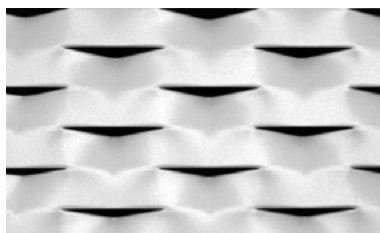
MD LUCERNA



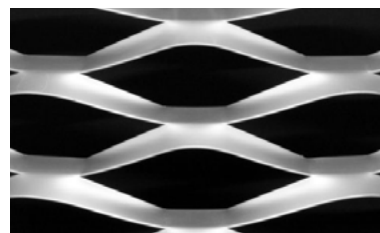
MD OMEGA



MD PRIVACY



MD RESERVE



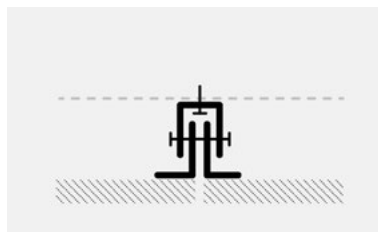
MD STADIUM



Factory 1963 in Busan, South Korea

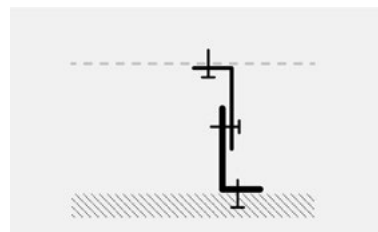
Fastening systems

We have visible and blind fastening systems which are endlessly applicable.



MD RESTO - STR111

Blind fastening system



MD VERTI - STV111

Visible fastening system

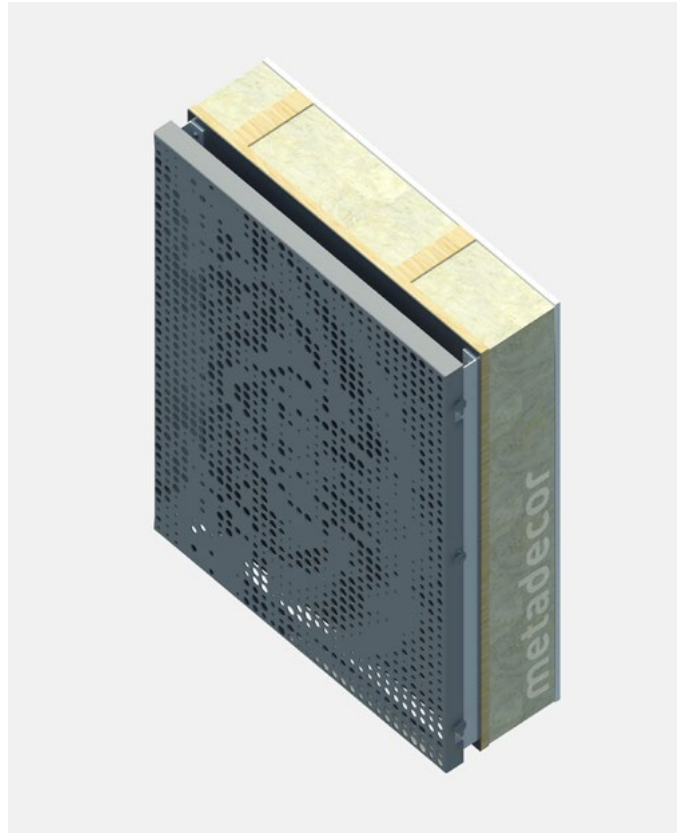
GRAAFSCHAP COLLEGE IN DOETINCHEM, THE NETHERLANDS

MD DESIGN

Graafschap College



PERFORATION



MD Designperforation

A façade with MD Designperforation guarantees a unique and remarkable appearance. Every design is realizable. In the interior design MD Designperforation is used for decoration, illustration or for example for covering acoustic walls. When a perforated wall or façade is provided with (LED) lighting, it gives the building a sublime identity.

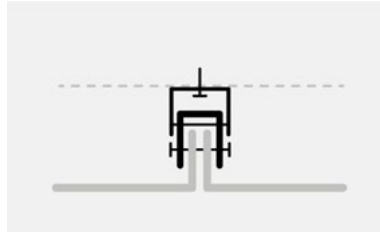




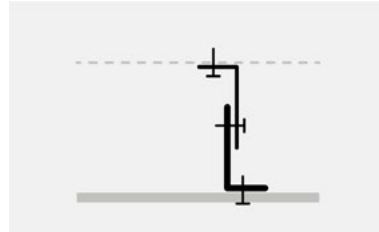


Fastening systems

We have visible and blind fastening systems which are endlessly applicable.



MD RESTO - DER111
Blind fastening system

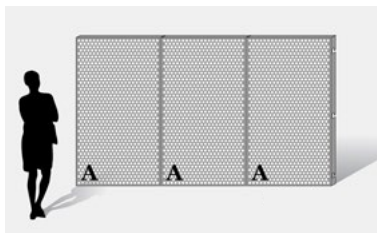


MD VERTI - DEV111
Visible fastening system

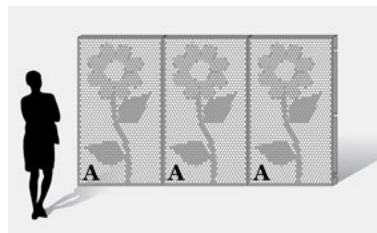
Examples of patterns

Do you want to display a repetitive pattern or a large continuous image on your facade?
Every design is realizable. Below you can see the three pattern groups MD DE110, MD DE210 and MD DE310. Within these groups, the possibilities of different patterns are endless.

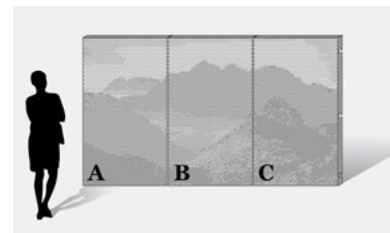
The MD DE110 consists one hole shape and one hole size in a certain pattern.
All different hole shapes, hole sizes and patterns are possible. The MD DE210 consists several hole shapes and hole formats, in a repetitive image per panel. The MD DE310 gives most possibilities. Here, hole sizes vary in a pattern that extends over several panels.
So it is possible to display one large continuous image on your facade. Remarkable is it.



MD DE110



MD DE210



MD DE310



Shopping centre Kalandersstraat in Enschede, The Netherlands



RESIDENTIAL COMPLEX PLANTSOEN IN LEIDEN, THE NETHERLANDS

MD FORMATU



OS
RA



Tussen de Lakens in Amsterdam, The Netherlands



MD Formatura

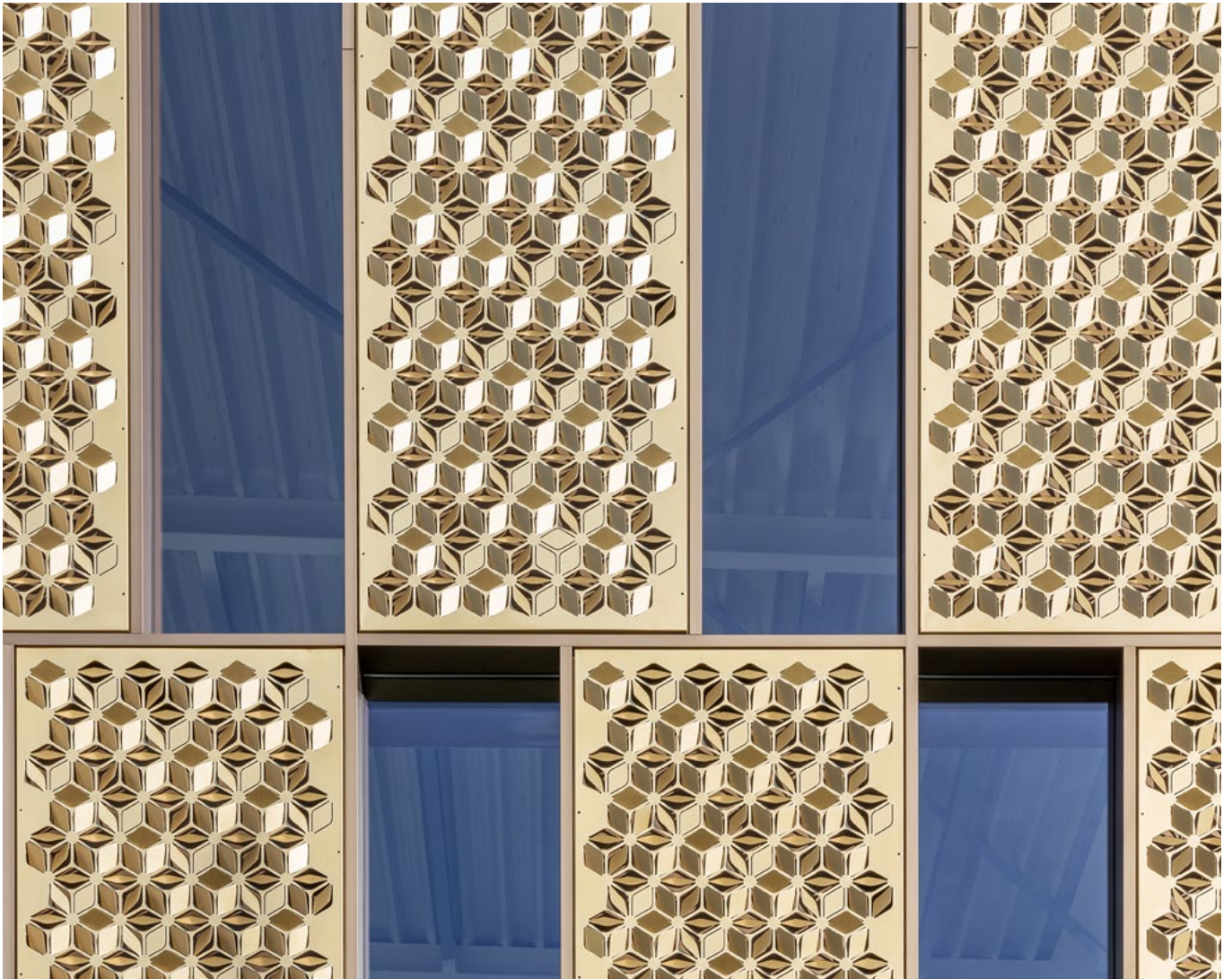
An exciting light and shadow play. Controlling wind load and indoor climate. With MD Formatura the most controversial designs are realized. Because variable openings are possible, it can slow down the wind and the entry of sunlight. Depending on how the sun moves across the building, the position of the figures are as favorable as possible.

To limit reflection inwards, the coating can be adjusted.









Shopping centre Kalanderstraat in Enschede, The Netherlands

Sample patterns

MD Formatura has three different pattern types. Pattern type 1 has the same shape and direction. Pattern type 2 has the same shape and different directions.

And pattern type 3 has different shapes and directions.



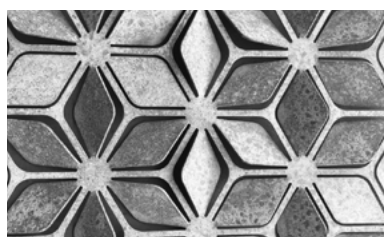
MD FO110



MD FO111



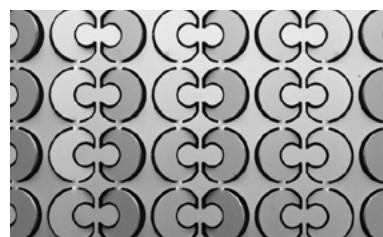
MD FO112



MD FO210



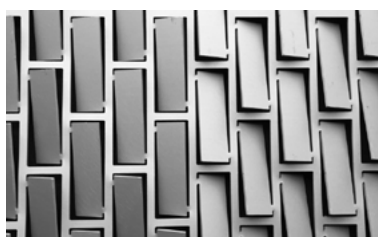
MD FO211



MD FO212



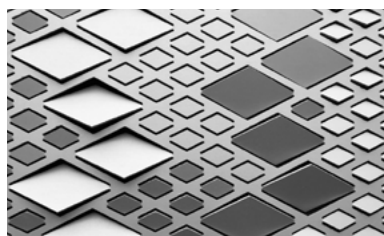
MD FO215



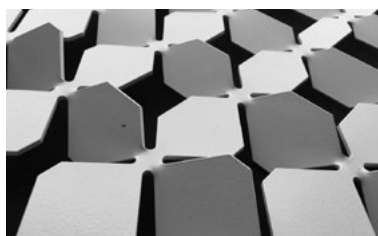
MD FO216



MD FO217



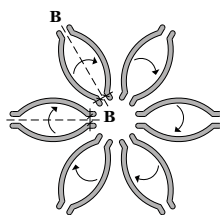
MD FO310



MD FO311



MD FO314



Figures

MD Formatura consists of a pattern of figures where parts are converted. These figures can have equal forms or different forms. With the same figures a pattern can be created by converting parts in two different directions, through which a image arises in the shadow. This effect can be strengthened in case of different shapes, sizes and directions. Above you see an example of how a shape must be converted. Preferably, the shaft (B) has a width of approximately 5 to 6 mm.

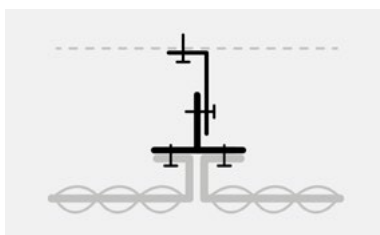
Do you want to make a design with MD Formatura?

Download the design guidelines on our website.

Fastening systems

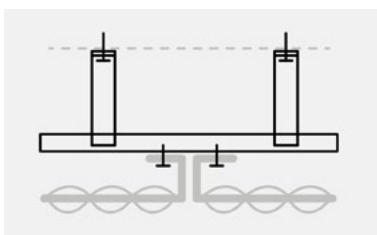
With a tightly finished facade, a blind fastening system is the finest solution.

A visible fastening system is also possible.



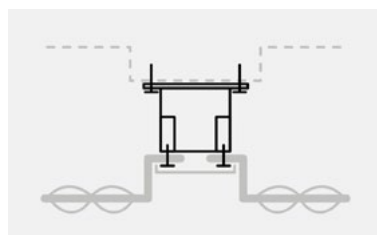
MD RESTO - FOR111

Blind fastening system



MD RESTO - FOR112

Blind fastening system



MD RESTO - FOR113

Blind fastening system

A photograph of a wall made of numerous vertical red slats. The slats are arranged in a slightly staggered, overlapping fashion, creating a rhythmic pattern. The wall is set against a clear blue sky with a few wispy clouds. The lighting is bright, casting soft shadows between the slats.

OFFICE MACCHINE PER CAFFE ESPRESSO S.R.L. IN TIMISOARA, ROM

MD LAMEL



ANIA



MD Lamel

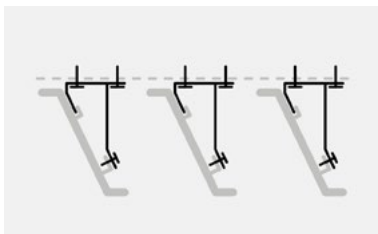
A facade with MD Lamel can be executed in horizontal or vertical position. This reduces the sunlight without losing the view. The inclined position of the slats ensure natural ventilation. MD Lamel is also widely used in parking garages and galleries where specific fire safety and ventilation regulations must be met.



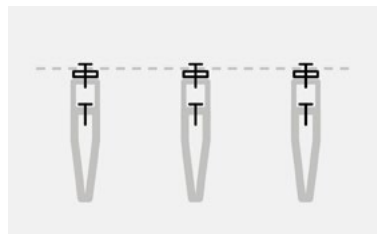
IKEA in Utrecht, The Netherlands

Fastening systems

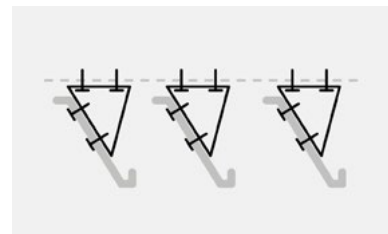
We have visible and blind fastening systems which are endlessly applicable.



MD RESTO - LAR111
Blind fastening system



MD RESTO - LAR112
Blind fastening system



MD VERTI - LAV111
Visible fastening system

Surface treatments

We offer various surface treatments. Both powder coating and anodising offer many possibilities. Below you can see a few options of anodising.

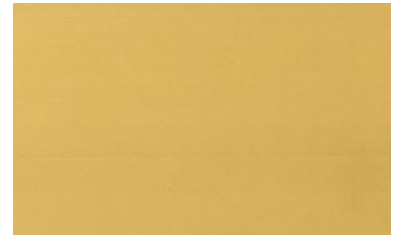
Our steel products are galvanized.



ALUNATURE



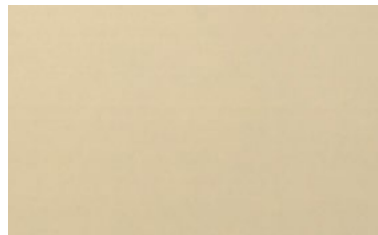
ALUGOLD 01



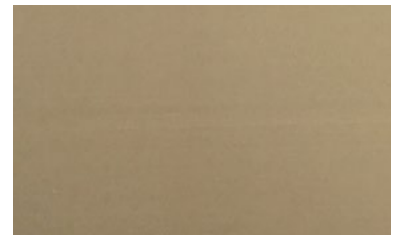
ALUGOLD 03



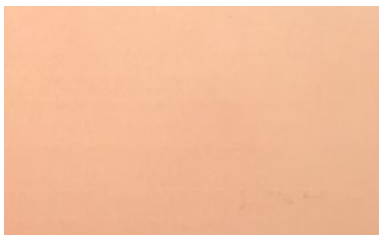
ALUBRONZE 01



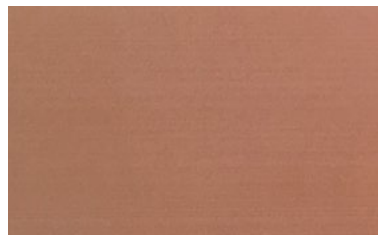
ALUBRONZE 02



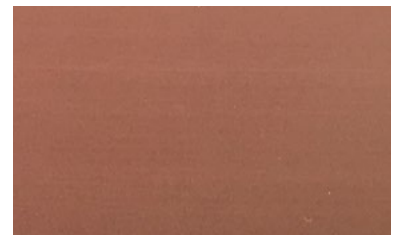
ALUBRONZE 03



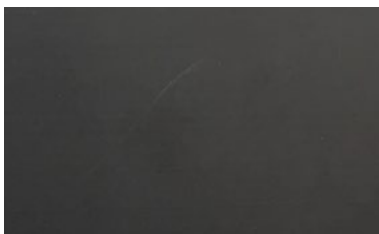
ALUCOPPER 02



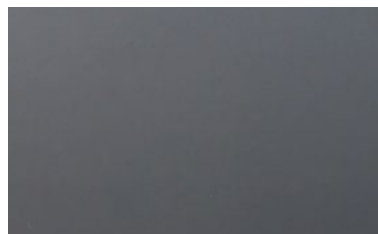
ALUCOPPER 03



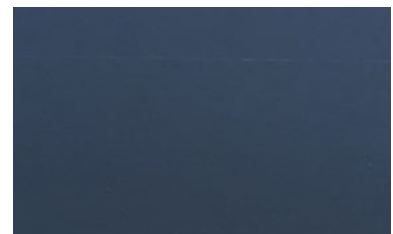
ALUCOPPER 04



ALUBLACK



ALUGREY



ALUBLUE

Materials

Our products can be made from aluminum, steel, corten, copper, stainless steel, brass, magnelis, aluminum composite and glass. We are happy to work with you to see which materials and products fits the best within your project.



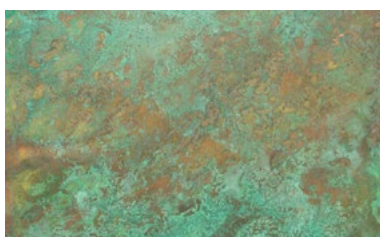
ALUMINUM



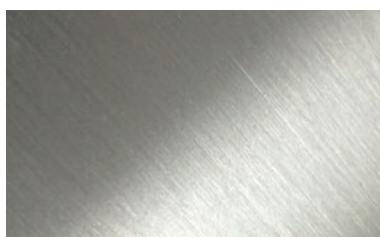
STEEL



CORTEN



COPPER



RVS



BRASS



MAGNELIS



ALUMINUM COMPOSITE



GLASS

MD Expanded metal	x	x	x	x	x				
MD Designperforation	x	x	x	x	x	x	x		

MD Formatura	x	x	x	x	x	x	x		
MD Lamel	x	x	x	x	x	x	x		

